
Welcome Aboard...

Kevin Nelson



We are growing again with the recent addition of Kevin Nelson to our Surveying Services Group.

Kevin graduated from UCONN in 2015 with a degree in Geomatics (which is the science of collecting and analyzing geographical information, including land surveying and mapping information).

Kevin is seen in the photo above collecting data with our new RTK GPS surveying system.

Year End Reflections...

As this year draws to a close, we wish to once again thank you, our clients, for providing us with the opportunity to work with and for you. While the year has had its challenges, we can safely say that it was better than the year before and now 2016 looks even brighter.

We look forward to new opportunities and new challenges in the year ahead.

See you in 2016!

387 North Main Street
Manchester, CT 06042
Phone: (860) 643-2520
Facsimile: (860) 649-8806
e-mail: info@meehangoodin.com
Internet: www.meehangoodin.com



Meehan & Goodin
Engineers - Surveyors, P.C.

Meehan & Goodin

Engineers - Surveyors, P.C.

Winter 2015 Newsletter



Best wishes
for you and your loved
ones from all of us at
Meehan & Goodin

A collection of handwritten signatures in various colors (blue, green, red, black) arranged in a circular pattern. The signatures include: Scott Hallett, Kevin Nelson, Dannie, Ro, Dizzie Touss, Richard Meehan, Franck A. Krause, and E. Rick Zell.

How Can We Help You Today?

- Site Planning
- Civil Engineering
- Land Surveying
- Permitting

- ◆ Richard Meehan, PLS
- ◆ E. Russell Johnston III, PE
- ◆ Robert E. Dahn, PLS

Call us to see how we can assist you on your next project. (860) 643-2520

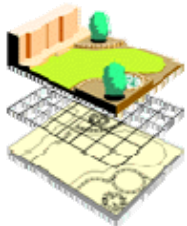


On The Web...

To learn more about our firm, visit us at our Website

www.meehangoodin.com

Land Use Development Seminars...



We offer free seminars on land use evaluation, development and planning, as well as on the latest survey standards and codes.

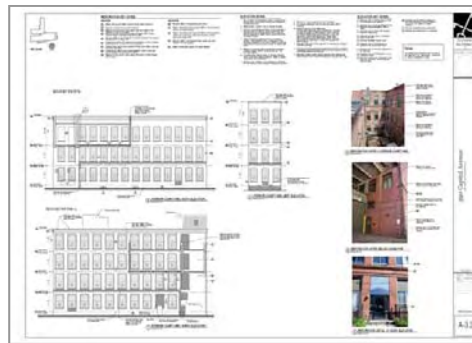
Call Richard Meehan for more information about how to set up a seminar for your group at your location.

Open for Fun... New Playground



Meehan & Goodin provided pro-bono surveying and site engineering services for the design and installation of The Jeffrey P. Ossen Family Foundation Community Playground in Mansfield. The project was a collective effort between our design team, the Town, and the many dedicated citizen volunteers who invested many hours and sweat equity on the actual construction of the playground.

Under Construction... Apartments in Frog Hollow



Rendering: Crosskey Architects

Construction is well underway on the adaptive reuse of a former industrial and office supply building at 390 Capitol Avenue in Hartford into 112 apartments. Dating from 1890, the building was the original home of the Pratt & Whitney Small Tool Company. Meehan & Goodin provided land surveying and site engineering services.

Business Approved... New Cancer Treatment Center



Rendering: MBH Architects

Meehan & Goodin provided surveying and site engineering services for the creation of the new state-of-the-art Cancer Treatment Center for Hartford Hospital in Manchester. The project involved four separate parcels, land swaps, and the design and reconfiguration of a comprehensive integrated parking scheme for the two buildings.

Project Approved... Building Re-Use and Addition



Meehan & Goodin has provided land surveying and site engineering services for a new building addition as part of the Hurley Company's expansion into Connecticut. The addition is one component of the overall conversion of a former industrial building into a parts depot for the Hurley Company.