

## After Hours... Costa Rica



Marc Goodin and his daughter Taylor, along with 15 of her school-mates from the International Baccalaureate Academy explored Costa Rica for 10 days

this winter. They traveled 4 hours on a one-way dirt trail and 3 hours by river boat to reach their first secluded destination of Tortuguero. Highlights of the trip included river rafting at Tilajari, boating under a forest canopy full of monkeys, hiking up Arenal Volcano to see flowing lava, La Fortuna hot springs and surfing at Manuel Antonio Beach.



## CBC Project Team Award...



The ESCU Child and Family Development Center Project in Wilimantic, Conn. was awarded first place in the Small Project-New or Renovation category in the 2006 Project Team Awards given by the Connecticut Building Congress.

We are proud to have provided site engineering services for this project in conjunction with Karl Norton Architect LLC, New England Design Inc., Konover Construction Corp., and all of the others on the team.

387 North Main Street  
Manchester, CT 06040  
Phone: (860) 643-2520  
Facsimile: (860) 649-8806  
e-mail: info@meehangoodin.com  
Internet: www.meehangoodin.com



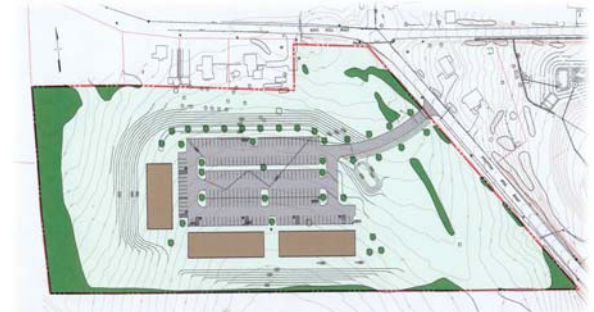
**Meehan & Goodin**  
Engineers - Surveyors, P.C.

# Meehan & Goodin

## Engineers - Surveyors, P.C.

### Summer 2006 Newsletter

## Open During Construction



Construction is now underway at the Sharon Hospital, and we have begun working with the architect and staff to design a medical office complex on a nearby parcel. The three buildings will house much-needed office and examination space for the doctors and provide enhanced medical options for the entire northwest Connecticut region.



An important component of the expansion project is the fact that the hospital must remain fully-functional at all times during the construction. Discussions with the contractors during a recent project coordination meeting were abruptly suspended by the arrival of Lifestar on the scene.

## How Can We Help You Today?

- Site Planning
- Civil Engineering
- Land Surveying
- Permitting

- ◆ Richard Meehan, PLS
- ◆ Marc Goodin, PE
- ◆ E. Russell Johnston III, PE
- ◆ Robert E. Dahn, PLS

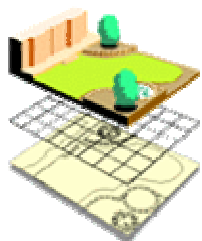
Call us to see how we can assist you on your next project. (860) 643-2520

## On The Web...



To learn more about our firm, visit us at our Website  
[www.meehangoodin.com](http://www.meehangoodin.com)

## Land Use Development Seminars...



We offer free seminars on land use evaluation, development and planning, as well as on the latest survey standards and codes.

Call Richard Meehan for more information about how to set up a seminar for your group at your location.

## On the Boards... Parking Enhancements



When most people think of downtown parking, they think of the large parking garages or rows of parking meters along the streets. There are also many "small" surface parking lots

throughout the downtown area which provide daily parking for people working in the area. We are working with LAZ parking and the City of Hartford to enhance drainage and appearances for four of these mini-lots.



## In the Works... Turning on a dime!



When a potential tenant requested that a loading dock be added to a project already under construction, we worked with our client, Winstanley Enterprises, to prepare a revised site plan and application that seamlessly incorporated the new designs and permits into the ongoing project, saving significant time and costs.

## Applications Made...

### One of the last remaining lots



Meehan & Goodin has completed the surveys, site plans and has made the land use applications for the development of an 8000 square foot building in one of the final lots in the Parker Village Industrial park in Manchester.

## One of Many...

### The "New" ALTA/ACSM survey



Shown above is just one of the almost 50 ALTA/ACSM Land Title Surveys we have provided since the inception of the 2005 survey standards. You can link to a copy of the standards at our website.