
After Hours...

Bob Dahn, Russ Johnston and Marc Goodin thought it would be helpful for everyone to see where their sons (and lots of their money) are going these days.



Who: Lee Goodin
Where: University of Tampa, Tampa, FL
What: Business



Who: Will Johnston
Where: Bentley College, Waltham, MA
What: Business



Who: Patrick Dahn
Where: University of Hartford, W. Hartford, CT
What: Modern Language

387 North Main Street
Manchester, CT 06040
Phone: (860) 643-2520
Facsimile: (860) 649-8806
e-mail: info@meehangoodin.com
Internet: www.meehangoodin.com



Meehan & Goodin
Engineers - Surveyors, P.C.

Meehan & Goodin

Engineers - Surveyors, P.C.

Spring 2004 Newsletter

A Day in the Field...



Any surveyor will tell you that there is nothing more permanent than a monument. At 36"x7"x7" and 80 pounds each, once in place they remain in place. The downside is moving them and distributing 40 of them around the perimeter of a wooded 150+ acre site can be a formidable task.

Remembering how it was done *"back in the days"* our founding partner, Rich Meehan, merely waited for a decent snow cover, rigged up a heavy duty sled and made light work of the task. *"I milked it like it was a big deal, but the truth is I enjoyed getting away from the desk for a change and I picked the nicest two days in February."*

How Can We Help You Today?

- Site Planning
- Civil Engineering
- Land Surveying
- Permitting

- ◆ Richard Meehan, PLS
- ◆ Marc Goodin, PE
- ◆ E. Russell Johnston III, PE
- ◆ Robert E. Dahn, PLS
- ◆ Vernon S. Reed, Jr., PLS

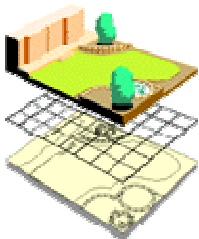
Call us to see how we can assist you on your next project. (860) 643-2520

On The Web...



To learn more about our firm, visit us at our Website
www.meehangoodin.com

Land Use Development Seminars...



We offer free seminars on land use evaluation, development and planning, as well as on the latest survey standards and codes.

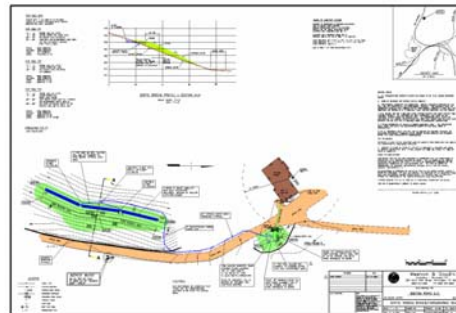
Call Richard Meehan for more information about how to set up a seminar for your group at your location.

Under Construction... Daycare Facility Addition



Construction is well underway at **ADVO's** new office and processing facility in **Windsor**. Meehan & Goodin has been retained to design modifications to our plan for the construction of an on-site Daycare Facility.

Approved... Septic System Repair



Of all the problems facing homeowners, few can be as distressing as a failed septic system. If you add six bedrooms, steep grades and limited soil conditions, the solutions can only be found *"outside the box."*

We solved the problem by finding a suitable area some 30 ft. *"up the hill"* and then saved the homeowner money by incorporating most of the existing piping and tank into a new force main pump system.

Approved...

Coventry Self Storage, LLC

Self storage facilities are quickly becoming one of the regions fastest growing sectors. The demand for additional safe and dry storage has led to a proliferation of developments. Many communities welcome them as a means to increase commercial tax base with little traffic demand and no adverse effect upon municipal services. The *"trick"* is placement and landscaping; blending their mass with the surrounding landscape and avoiding monotonous repetition.



We recently acquired all approvals for a 61,000 sq. ft. storage project in Coventry consisting of 460 units in six separate buildings. The site design will establish significant new landscaping and screening onto an open cornfield and retain more than 85% available open space.



Our services included concept planning, boundary and topographic services, site designs and regulatory permitting. Construction is slated to begin in the Spring.