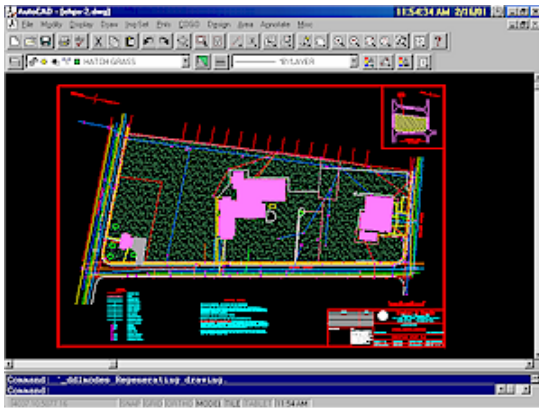


---

## Now You Know...

The art of creating survey and engineering drawings has undergone a phenomenal change in recent times. Maps and drawings once drafted by hand and with pencil and ink, today they are almost exclusively prepared on computers using a variety of Computer Aided Design (CAD) programs.



The screen shown above illustrates a typical drawing being prepared using AutoCAD. This happens to be the site of the proposed **East Hartford Public Safety Complex** featured on the cover.

---

## After Hours...



Piyush Patel, Engineering Technician at Meehan & Goodin, and his wife Ripal celebrated their first wedding anniversary this winter with an elaborate and festive gala. In addition to sampling an incredible

array of Indian foods, family and friends participated in several traditional dances. This picture captures the graceful and fluid movement of the Dandiya, a test of the dancers endurance in which the dancers keep time to the music with sticks.

---

387 North Main Street  
Manchester, CT 06040  
Phone: (860) 643-2520  
Facsimile: (860) 649-8806  
e-mail: [info@meehangoodin.com](mailto:info@meehangoodin.com)  
Internet: [www.meehangoodin.com](http://www.meehangoodin.com)



**Meehan & Goodin**  
Engineers - Surveyors, P.C.

---

# Meehan & Goodin

## Engineers - Surveyors, P.C.

### Spring 2001 Newsletter

---

## On the Boards...



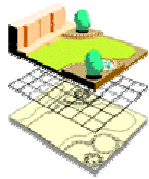
Rendering by Patrick Mancuso  
Capital Studio Architects

The **Town of East Hartford** will soon be preparing plans for their new Public Safety Complex and Meehan & Goodin is proud to be a part of this exciting project.

The new complex will provide space for new administrative offices for the police and fire departments and the new Fire House #3. The project will also include the renovation of and additions to several existing structures on Main Street for use as new administration offices for the Board of Education.

---

## We Provide the "Complete Package"...



From feasibility studies, through survey, design, permitting, construction and certifications, we are ready to guide your project to success!

Call us to see how we can assist you on your next project. (860) 643-2520

- ◆ Richard Meehan, LLS
- ◆ Marc Goodin, PE
- ◆ E. Russell Johnston III, PE
- ◆ Robert E. Dahn, LLS
- ◆ Vernon S. Reed, Jr., LLS

### How Can We Help You Today?

- Land Development
- Civil Engineering

### On The Web...



To learn more about our firm, visit us at our Website  
[www.meehangoodin.com](http://www.meehangoodin.com)

### Do you have a zoning question?

Call us with your zoning questions. We maintain up-to-date files for many Connecticut towns and cities and a CD-ROM based system for retrieving specific data. We'd be glad to help!

## Under Construction Construction Stake-Out



Meehan & Goodin is providing construction stake-out surveys for the ongoing construction project to replace the North Main Street bridge over the **Hockanum River** in **Manchester, CT**.

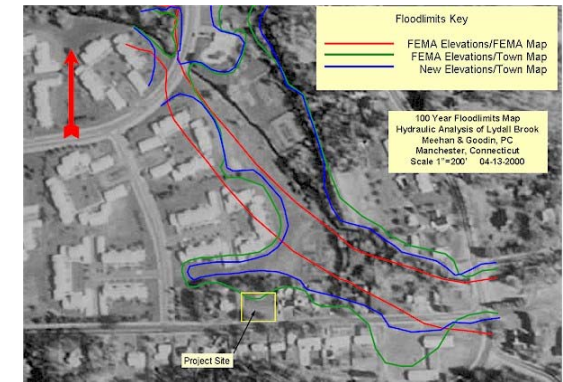
**Client & Contractor:** MIG Corporation, Inc.  
Chelmsford, MA

## Recently Awarded Civil Engineering



Continuing our long relationship with the **Conn. Department of Environmental Protection**, we will be designing repairs to three state owned dams this spring in **Stafford** and **South Windsor, CT**. Included is the coordination of internal pipe inspection of the principal spillways at seven additional dams in Connecticut.

## Project Completed Hydraulic Analysis



As part of a residential site plan, Meehan & Goodin prepared a detailed hydraulic analysis to delineate the 100 year floodplain for a section of **Lydall Brook** in **Manchester, CT**. Aerial photographs aided in the presentation of the results of this analysis.

## Project Approved "The Complete Package"



Meehan & Goodin provided "**the complete package**" of surveys, site engineering and permit applications for this new 143 room hotel across the street from **Bradley International Airport**, Route 75, **Windsor Locks, CT**.