

---

**After Hours...**

It was a summer of fishing for many of our staff this year.



Bob Dahn and some extended family members after a successful fishing expedition on Lake Michigan

Here's a shot of Felipe Silva admiring a rather impressive fish caught by his son on Columbia Lake before they released it back to the water.



Sometimes the boat ride is the best part of the trip (or at least that's what you say when you get "skunked"). Here is Marc Goodin enjoying the ocean vista (but not a single fish) on the Connecticut shoreline.

---

387 North Main Street  
Manchester, CT 06040  
Phone: (860) 643-2520  
Facsimile: (860) 649-8806  
e-mail: [info@meehangoodin.com](mailto:info@meehangoodin.com)  
Internet: [www.meehangoodin.com](http://www.meehangoodin.com)



**Meehan & Goodin**  
Engineers - Surveyors, P.C.

---

**Meehan & Goodin**  
Engineers - Surveyors, P.C.  
**Fall 2005 Newsletter**

---

**New in the Neighborhood**

**LOFTS on CAPITOL**

© 2005 Tarragon Corporation. All rights reserved. No part of this publication may be reproduced, stored in a retrieval system, or transmitted, in any form or by any means, electronic, mechanical, photocopying, recording, or by any information storage and retrieval system, without the prior written permission of Tarragon Corporation.



bhva  
1000 Main Street, Suite 1000  
Hartford, CT 06103  
Tel: (860) 525-1111  
Fax: (860) 525-1112

**TARRAGON CORPORATION**  
100 Corporate Street, Third Floor - Springfield, CT 01103

Not all the new condominiums in Hartford will be located downtown. We are working with Tarragon Management, Inc., who is planning to convert the turn-of-the-century former Hartford Office Supply building on Capitol Avenue into 119 market rate condominium units in the Frog Hollow Neighborhood.

The plan will feature enhancements to the façade and streetscape, secured parking and spectacular views of the State Capitol from roof-top gardens and terraces. The ambitious schedule calls for permitting to begin in October and construction to follow immediately. Look for them to be on the market by Christmas.

---

## How Can We Help You Today?

- Site Planning
- Civil Engineering
- Land Surveying
- Permitting

- ◆ Richard Meehan, PLS
- ◆ Marc Goodin, PE
- ◆ E. Russell Johnston III, PE
- ◆ Robert E. Dahn, PLS

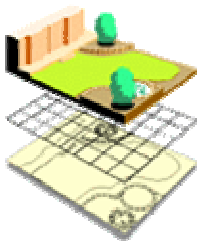
Call us to see how we can assist you on your next project. (860) 643-2520

## On The Web...



To learn more about our firm, visit us at our Website  
[www.meehangoodin.com](http://www.meehangoodin.com)

## Land Use Development Seminars...



We offer free seminars on land use evaluation, development and planning, as well as on the latest survey standards and codes.

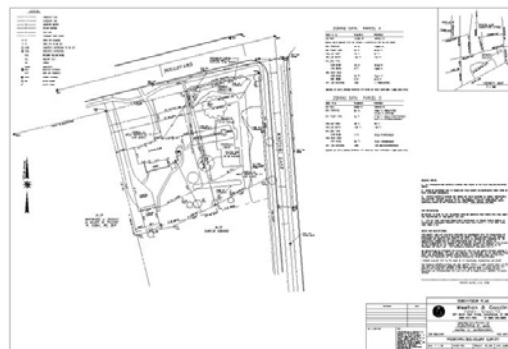
Call Richard Meehan for more information about how to set up a seminar for your group at your location.

## In the Works... Small Sites/Bigger Challenges

We sometimes meet our more interesting design challenges not during our work on major projects, but from single homeowners who want to build or expand improvements on smaller lots with restrictive features, such as wetlands, slopes or relatively significant zoning setbacks. Shown here are three such projects..



The first is an in-ground pool and associated landscaping for a house placed very near its' sideline. The second depicts a rather large housing footprint on a small lot with an even smaller "buildable area". The plan below shows a small two-lot subdivision in West Hartford that spanned three separate zoning districts.



## On the way... Fire Access Road



We recently designed a small emergency access road to a remote fire hydrant as part of the conversion of the former Heublein building for use by the UConn Health Center in **Farmington** for **Perkins + Will Architects**. To minimize the visual impact of the road, a stone dust surface similar to that used for rails-to-trails multipurpose walkways will be used.

## Nearing Completion... Giant Frog!



This giant frog is just one of the unique features at the new Child and Family Development Resource Center slated to open soon at Eastern Connecticut State University in Windham. Meehan & Goodin prepared the site plan for this project that included parking, drainage and a sanitary sewer extension.